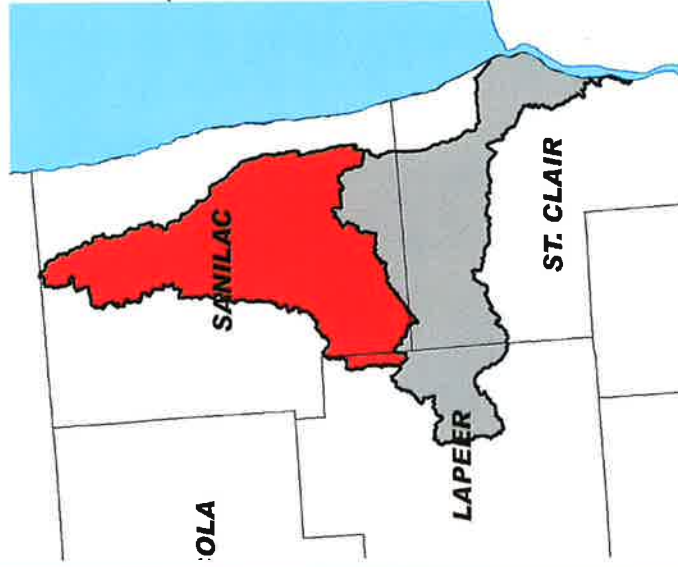


Upper Black River Sub-Watershed



Status and Trends Pre-settlement to 2005



Department of
Environmental Quality
Land and Water Management Division
By: J.J. Jones
January 2010



DATA LIMITATIONS AND DISCLAIMER

National Wetlands Inventory (NWI)

- Wetland boundaries determined from Aerial Imagery
- Last updated in 2005
- Obvious limitations to Aerial Photo Interpretation:
 - Errors of Omission (forested and drier-end wetlands)
 - Errors of Commission (misinterpretation of aeriels)

The 2005 NWI data was used in this analysis to report status and trends, as this is currently the best data source available. However, this data may not accurately reflect current conditions on the ground.

THE MDEQ-Land and Water Mgmt Division has begun a joint project with Ducks Unlimited, Inc. to update the 1978 NWI using 1998 aerial imagery and 2005 aerial imagery. The project is on going, and this data will be used for all future Wetland Status and Trends analysis.



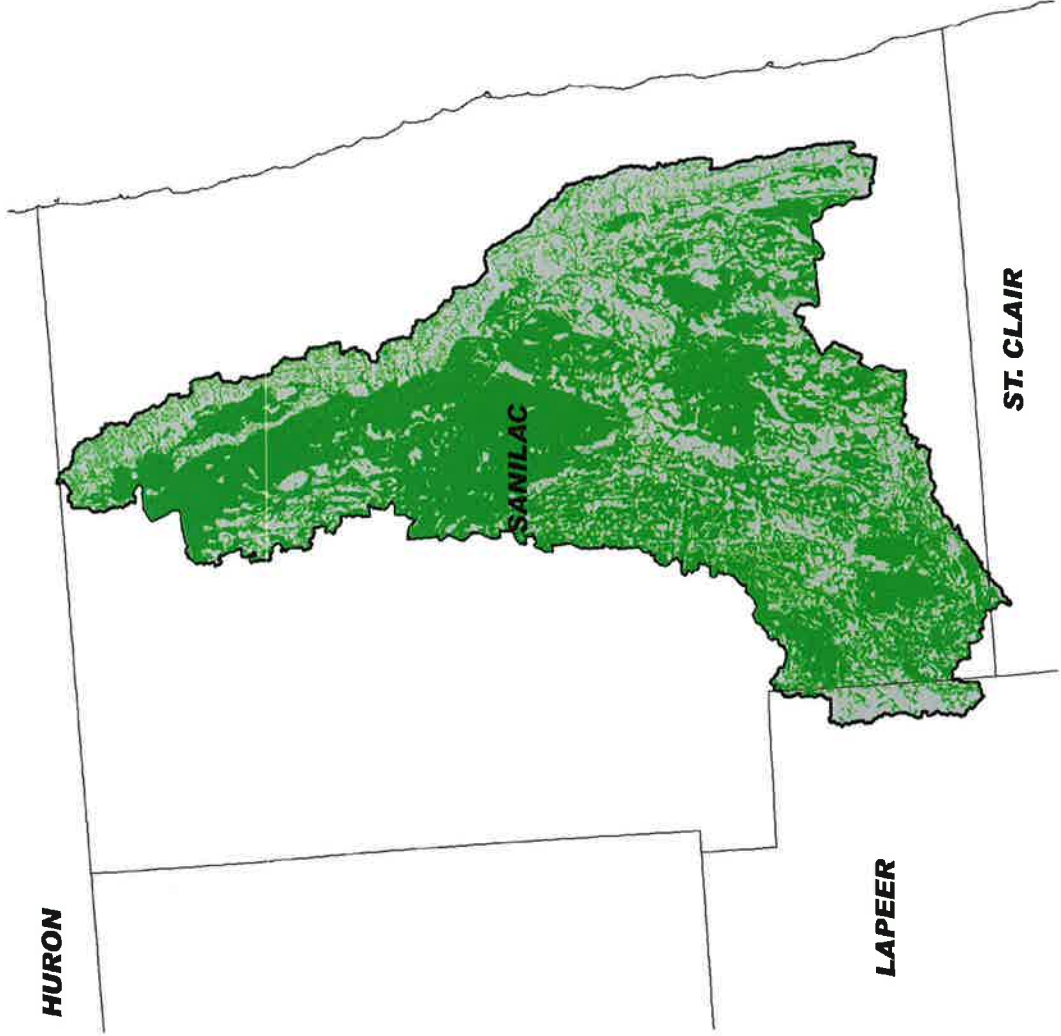
UPPER BLACK RIVER SUB-WATERSHED: WETLAND RESOURCES STATUS AND TRENDS

- PRESETTLEMENT WETLAND CONDITION □ 2005 WETLAND CONDITION
- 142,982 total acres of wetland □ 16,520 total acres of wetland
- 2,694 Polygons □ 1,552 Polygons
- Average Size – 53 Acres □ Average Size – 10.6 Acres

11 % OF ORIGINAL WETLAND ACREAGE REMAINS
89 % LOSS OF TOTAL WETLAND RESOURCE

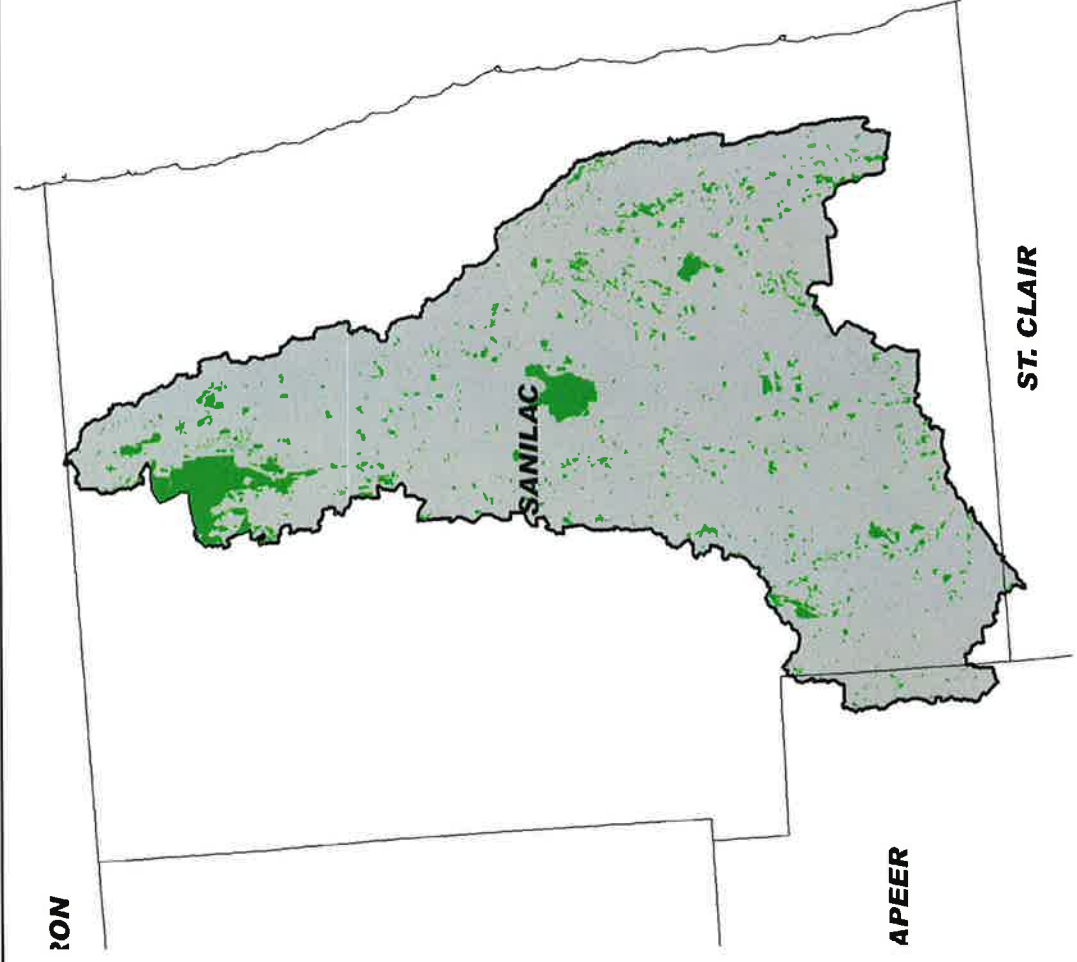


UPPER BLACK RIVER SUB-WATERSHED: PRE-SETTLEMENT WETLANDS



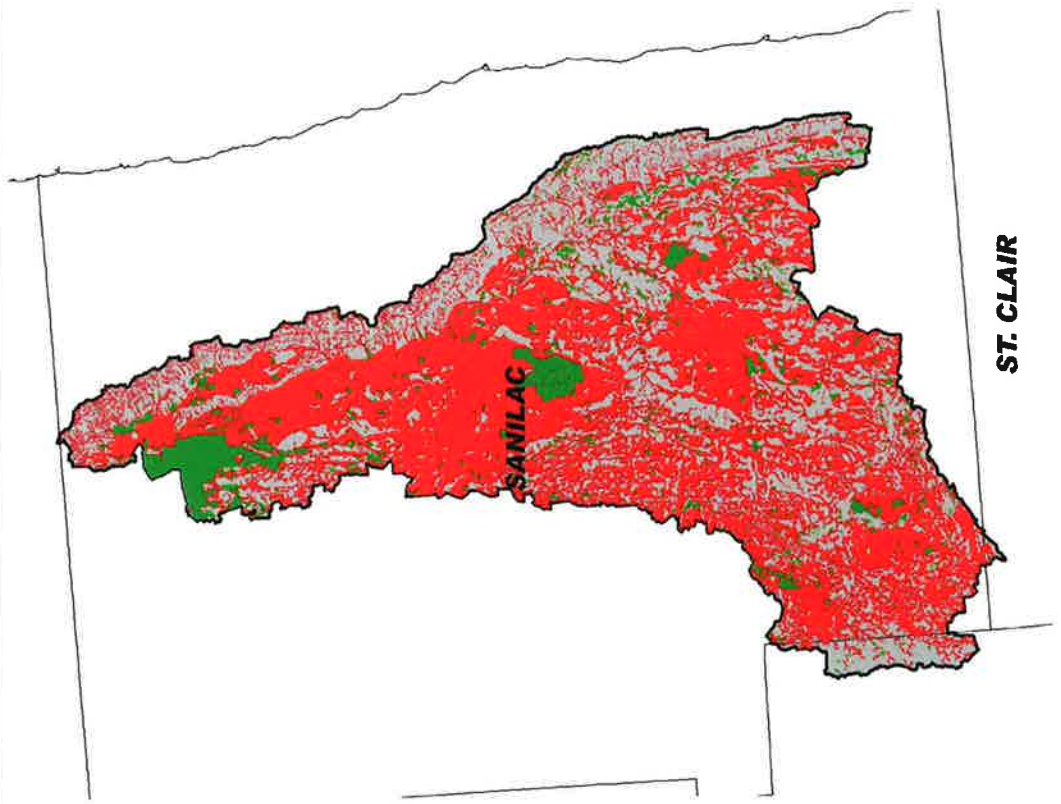


UPPER BLACK RIVER SUB-WATERSHED: 2005 NWI WETLANDS





UPPER BLACK RIVER SUB-WATERSHED: APPROXIMATE AREAS OF WETLAND LOSS



UPPER BLACK RIVER SUB-WATERSHED: Wetland Restoration Areas Map

